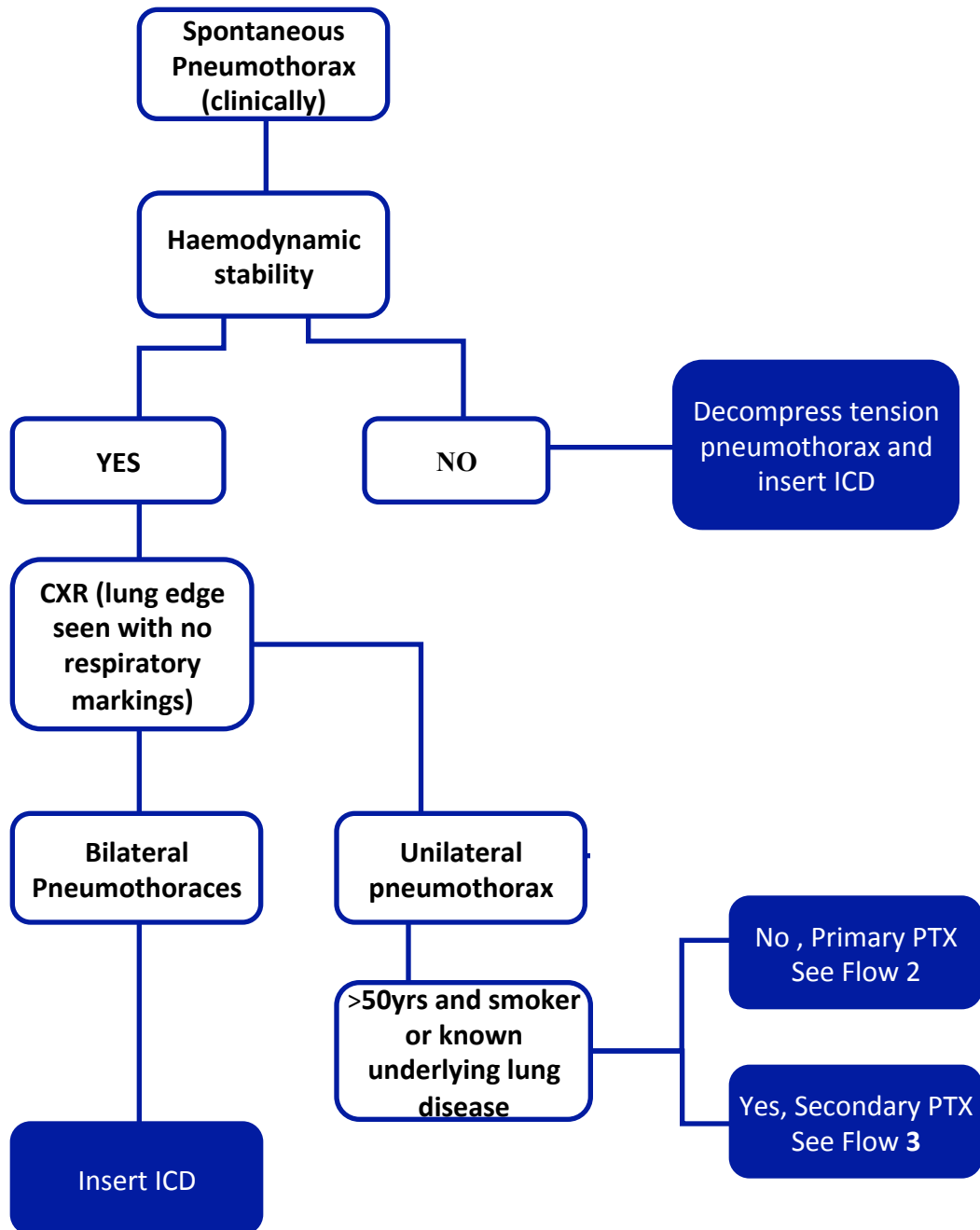
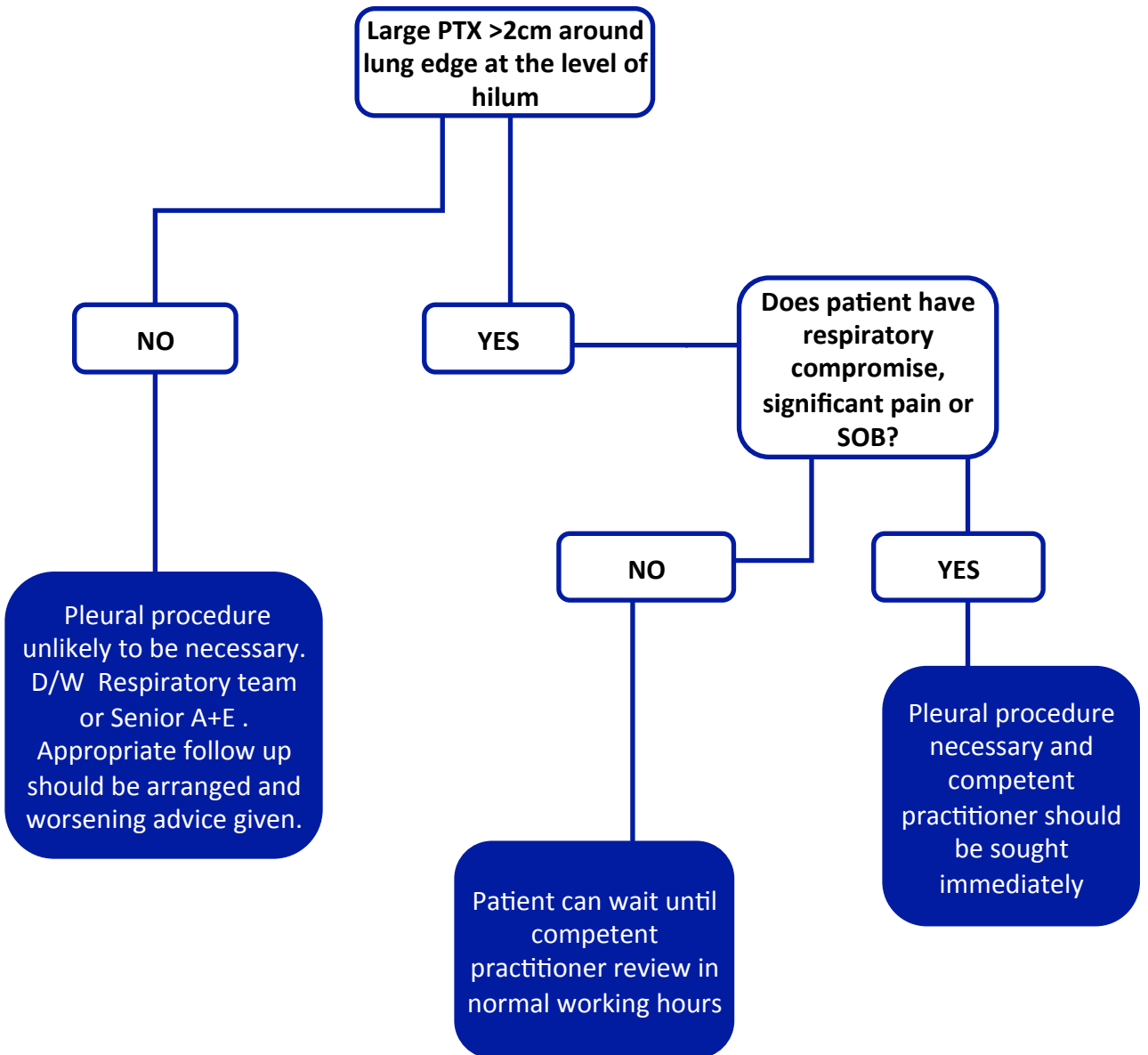


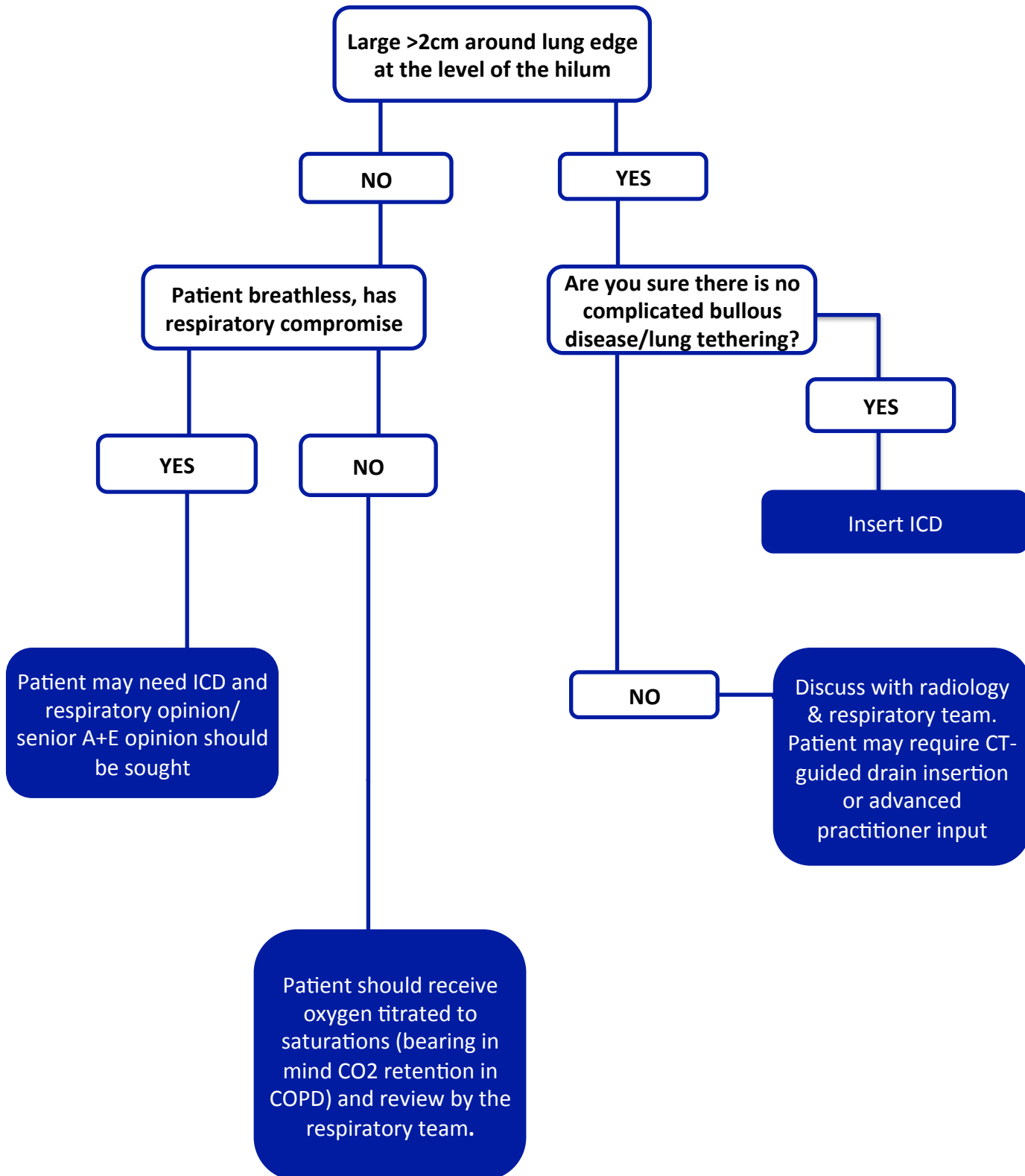
Flow Chart 1 - Does a Pleural Procedure Need to be Performed *Now?*



Flow Chart 2 - Unilateral Primary Pneumothorax



Flow Chart 3 – Unilateral Secondary Pneumothorax



Flow Chart 4 – Pleural Effusion

It is rare to require intervention OOH.

Below are some limited indications for intervention.

